

Cieux Rock Trail

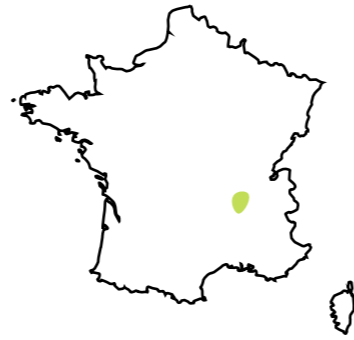
Le Chemin des
Roches à Cieux

LOCATION

Sainte-Croix-en-Jarez, France

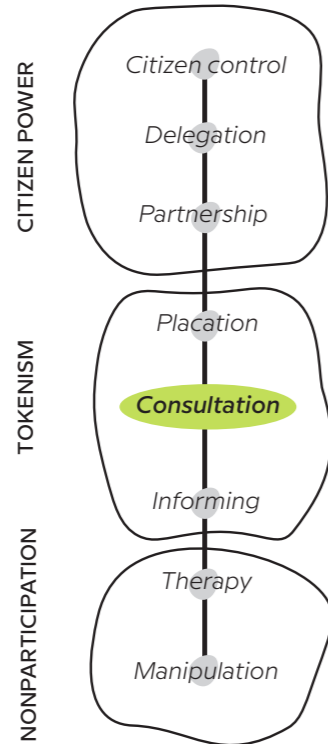
TIME PERIOD

From 2021 to 2022



THE PROJECT

The project consists in the creation of a trail in Sainte-Croix-en-Jarez and around its direct vicinity. This trail goes through the Old Chartreuse, the few streets of the village and natural spaces. The aim of the project is to encourage visitors to explore the surroundings a little further to get to know other aspects of the village. The final goal is the development of slow and green tourism in the area.



elements of Sainte-Croix-en-Jarez. The project received financial and institutional support in the frame of the “designer in residence in the municipalities” program. This program, wished by Saint-Etienne Métropole”, aims to support local development and attractiveness for isolated or rural places.

RESULT

Given the fact that the project is **still in progress**, it is not possible to say whether the project has achieved its target. The last installations should be completed by November 2022. The project targets different types of people: the inhabitants of the village, the informed visitors with an appetite for creation (those passing through the season), the families residing in the Saint-Etienne Métropole and also people practising outdoor leisure activities.

DESCRIPTION OF THE SPACE

Sainte-Croix-en-Jarez is a small village located in the Regional and natural park of Pilat. The settlement could be defined as a remote place first by the fact the village is **not connected to a public transportation network**. Moreover, the remoteness of the area is characterised by a **low population density** and by the difficulties in accessing daily-life support facilities. The road network is in good condition and there are some hiking and biking trails. In the settlement, there are few public spaces but no squares or parks.

was supported by the Parc naturel du Pilat. In addition, they benefited from the help of the Cité du design, which was in charge of the design part.

ROLE OF THE LOCAL COMMUNITY & METHODS USED

The trail emphasises the qualities of surrounding nature through installations interacting with the nature flows (wind, light and water). Moreover, « Stones of the heavens trail » is the redline and guides the visitors along the trail. This material was used for the construction of the Chartreuse and serving as the support for local legends of Roches de Marlin. **The local community was involved in the project when the project started with about twenty interviews with villagers.** These interviews allowed to get a grasp of the specificity and remarkable

WHAT MAKES THE SPECIFICITY OF THE PROJECT

This project was initiated by the commune of Sainte-Croix-en-Jarez and Saint-Etienne Métropole. It



Chemin roches à cieux ©Isabelle Daëron



©OpenStreetMap contributors



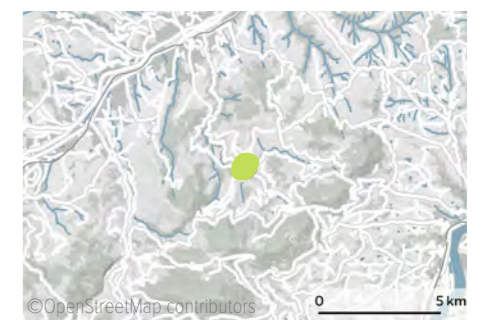
Chemin roches à cieux ©Isabelle Daëron - photo by Pierre Grasset



Chemin roches à cieux ©Isabelle Daëron - photo by Pierre Grasset



Chemin roches à cieux ©Isabelle Daëron - photo by Pierre Grasset



Sainte-Croix en Jarez, Auvergne-Rhône-Alpes, France

more about
this project



Creative works in
small and remote
places: European
best practices
exploration

Link to the publication:
<http://www1.uirs.si/en-us/book/id/119>