

Utopias Bach

Utopias Bach

LOCATION

Gwalchmai, Penrhyndeudraeth, Fron, Bethesda, Llangoed, Porthaethwy and Nant Peris

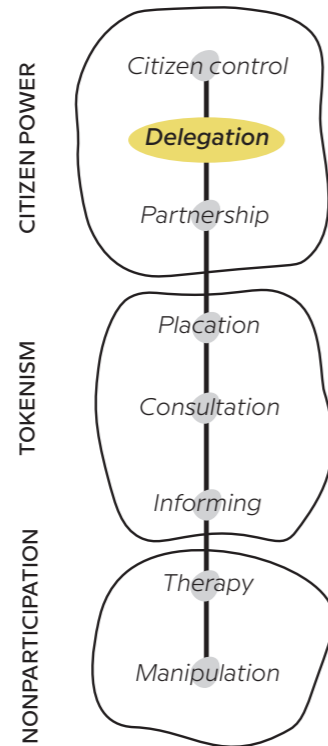
TIME PERIOD

Since 2020



THE PROJECT

Utopias Bach involves experiments where **artists and diverse communities work together to re-imagine the world on a small scale** through interconnected, supportive, creative hubs in North Wales and beyond. The project gives people freedom not to have to think about the real world, and take a playful look at problems without consequence, to radically imagine. The activities have taken place in **7 geographic locations** including community open air spaces, shop windows, and public indoor and outdoor spaces. Others have taken place online due to Covid.



is encouraged to explore and own their biases. Moreover and from the beginning, the local community has been involved in collaboration with Community Connectors

RESULT

The project has an organic process and is still asking questions, is frequently changed by encounters with new members and world events, and is **in a continuous state of becoming**. The project evolves along with members and with non-members, as well as with other species. Interviewees emphasised that there is a freedom in going forward with a project without it being something, without having an 'outcome'. The **main beneficiaries of these activities are marginalized voices, artists, various communities, non-human beings including flora and fauna**. The strength of the project is that it's not about failure or success, and that deadlines and 'outcomes' don't necessarily allow for deep, organic exploration of ideas, and can lead to weak or superficial solutions for problems.

DESCRIPTION OF THE SPACE

The area around the counties of Gwynedd and Anglesey, where the 7 geographic locations of the project are located, are **largely rural**, composed of small villages and towns with direct access to nature and wildlife. This, as noted by the members of the project, is **not necessarily a reason why a place should be labelled remote**. Some of the members reported feeling much more connected to the rest of the world and their community after they moved to these purportedly 'remote' areas. Statistically, in terms of population density, poverty and access to services, these places sit on the lower end of the scale when compared to neighbouring regions.

Project, the host organisation, 'plantlets', a grassroots community group, community connectors and also lead artists.

ROLE OF THE LOCAL COMMUNITY & METHODS USED

The experiments range from geographical communities meeting together weekly to discuss ideas to dispersed networks sharing detailed observations to mini-festivals and small-scale on-the-ground actions. The discoveries and connections made become the starting point for discussion, **generating lasting networks, support, tools and strategies** for thought and action. This project is **counter-mainstream, counter globalisation**, working small and local, and focuses on what the world will be like in future. It's nature is strongly collaborative, democratic, and non-judgmental - each member

INITIATION AND ACTORS

Various actors have been involved in this project, from Plas Bodfa



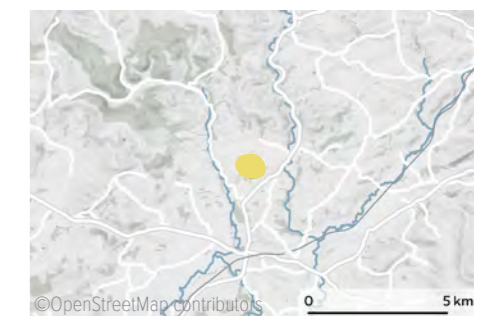
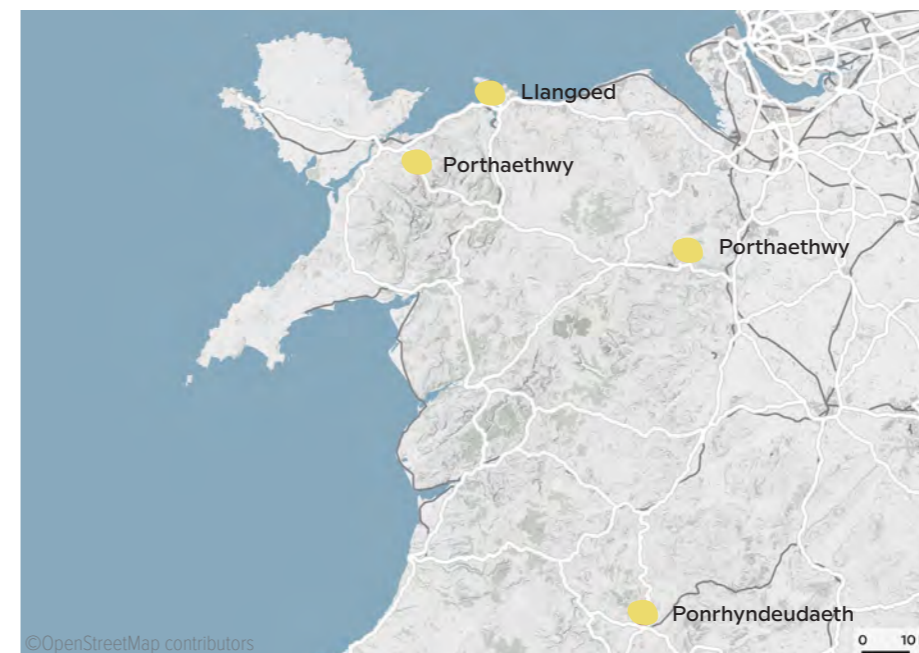
Utopias Bach mapping workshop
©Utopias Bach - Mark Gahan



Geocache Bach, Treborth
©Utopias Bach - Lindsey Colbourne




Utopias Bach
©Utopias Bach - Lindsey Colbourne



Gwalchmai, Penrhyndeudraeth, Fron, Bethesda, Llangoed, Porthaethwy and Nant Peris, Wales, United Kingdom

more about this project





Creative works in
small and remote
places: European
best practices
exploration

Link to the publication:
<http://www1.uirs.si/en-us/book/id/119>