

# Pentredwr Hub

Hwb Pentredwr

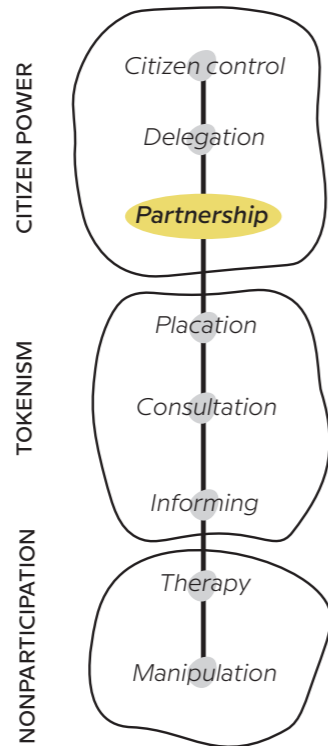
LOCATION  
**Denbighshire, Wales, United Kingdom**

TIME PERIOD  
**Since 2018**



## THE PROJECT

This project takes place through **workshops**, predominantly in the two renovated indoor spaces: the wool museum in Llangollen and the community centre of Pentredwr. Activities' aim is to tackle the increasing levels of social and digital isolation in this remote place but also the **community cohesion and the lack of a common public place**. The project seeks to secure community prosperity by developing rural skills and enterprise.



was the key of the project.

## RESULT

As objectives' analyses are established after a two year period, it is **too early to say if the targeted impacts are achieved. However, over the past years, there has been an increase in the frequency of events**, in usage of the two buildings and in community connection. In gaining rural skills and a community hub where people can meet, the local community was the main beneficiary of this project. Moreover, the Hwb has resulted in some economic benefits. The first visitors seem to appreciate the project as they keep coming back, enjoying visiting the place. However, the only negative feedback is the fact that Pentredwr is hard to get to.

## DESCRIPTION OF THE SPACE

The towns inside Denbighshire can be defined as remote by their **lack of transportation connections and a poor access to services**. Indeed, it is difficult to reach the few public spaces without a car. The area's isolation is also due to its geographical location. The **low population density and the economic inferiority** maintain this remoteness. In this area, there are **not that much public spaces but the few ones are well equipped**. The main problem of this county is the lack of a central public place gathering people.

## INITIATION AND ACTORS

Hwb Pentredwr is a project jointly delivered by the Pentredwr and District Community Association and Gwalangollen. The first one wished to develop a community

facility, and the second one's motivation was to pass on heritage skills to future generations.

## ROLE OF THE LOCAL COMMUNITY & METHODS USED

Hwb Pentredwr has been created as a rural skills centre. As **sheep production is central in this area, the activities are promoting wool and exploring the uses of locally produced fleece** through demonstrations or workshops of wool craft. The **community has been involved at every steps, from the renovation of the buildings to the grant applications**. Everyone has used their skills and Hwb Pentredwr coordinated them. Sheep farmers are very supportive in coming to the events and donating as much fleece as needed. Although the project received a grant from the National Lottery's Rural Futures, the enthusiasm from the community



Wool event at Ysgol Pentredwr  
©Ema Howe for Pentredwr and District Community Association



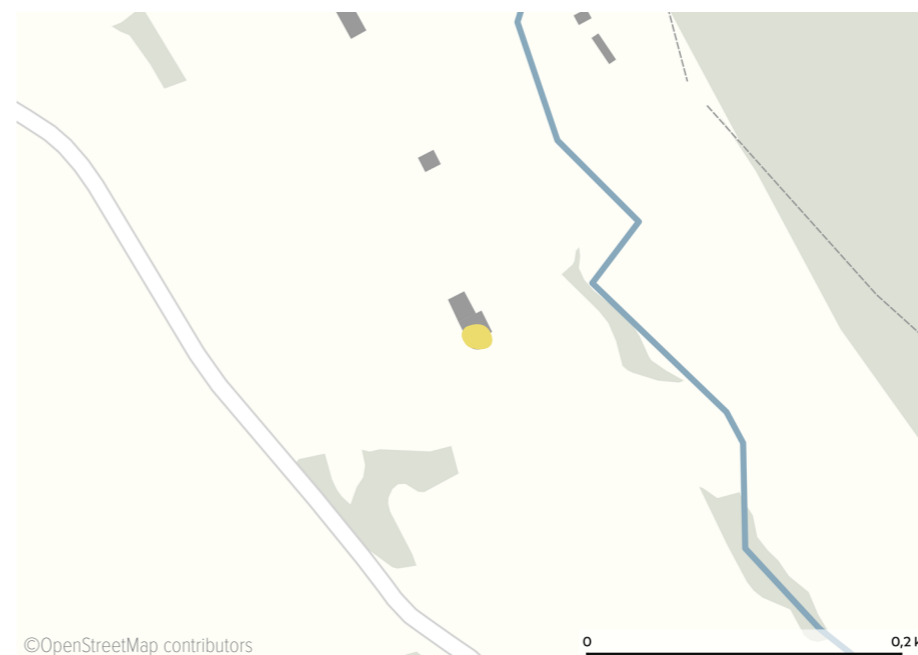
Wool event at Ysgol Pentredwr  
©Ema Howe for Pentredwr and District Community Association



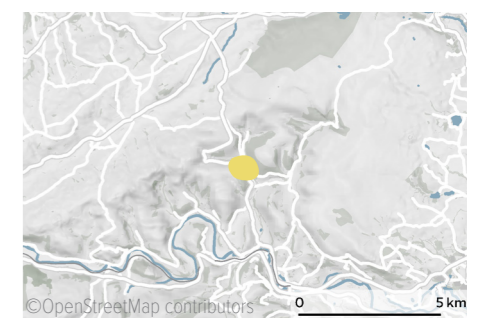
Hand loom  
©Ema Howe for Pentredwr and District Community Association



Wool preparation  
©Ema Howe for Pentredwr and District Community Association



©OpenStreetMap contributors



©OpenStreetMap contributors  
Denbighshire, Wales, United Kingdom

more about this project

