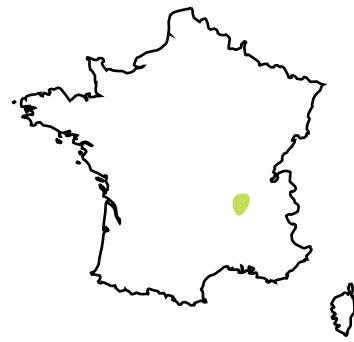


Local people tell the story of the town of Dunières

Des habitants racontent le bourg de Dunières

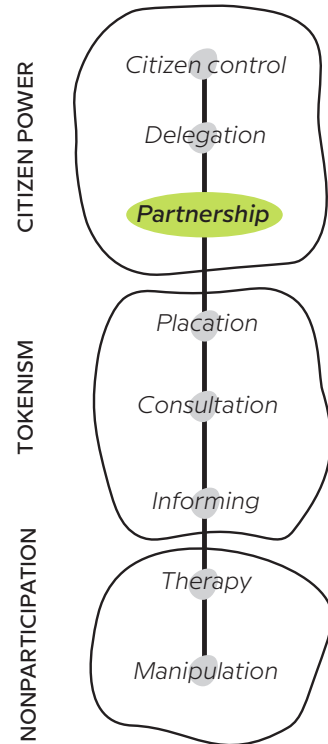
LOCATION
Dunières, France

TIME PERIOD
From 2019 to 2021



THE PROJECT

This project is a part of the urban study on **revitalising Dunières town centre**. There, a **participatory sensitive-type approach** was proposed. The activity attempted to **reveal the vernacular history and heritage** of Dunières. The aim was to uncover information, curiosity, the cultural and human potential of this territory which is not encompassed in more objective studies.



people's accounts of it. Just as important as the other activities, those that allow the participants to express themselves in a more personal way.

RESULT

The desired impact of the project was achieved and **this sensitive map had inspired the guide plan for revitalisation of Dunières**. The targeted impact relating to local pride/imaginary representations and stories was partly achieved. During the year 2022 the town has the intention to use this subjective map as a pedagogic tool inside public schools, to work the urban imaginary of Dunières with the children. It will be displayed in the window of a vacant shop in the centre of Dunières and it will be published in the local newspaper.

DESCRIPTION OF THE SPACE

Dunières is a rural town with a population of 2,733 inhabitants. Although the area is relatively dynamic, thanks in particular to its proximity to the employment areas of Saint-Etienne and Le Puy en Velay, it remains on the fringes of these demographic dynamics due to its distance from Highways or railway track. Moreover, the town has very few quality public spaces even if it is surrounded by a great landscape and a beautiful forest.

government. This participatory approach was proposed by the designers of the Urban Project Team. Local authorities, entrepreneurs, shop owners, NGOs and **habitants participated** in the dynamics of the project given the fact that it concerned the renewal of their town and it was essential to have their **contribution about their daily need, their vision for the future, and their emotional link with the territory**.

ROLE OF THE LOCAL COMMUNITY & METHODS USED

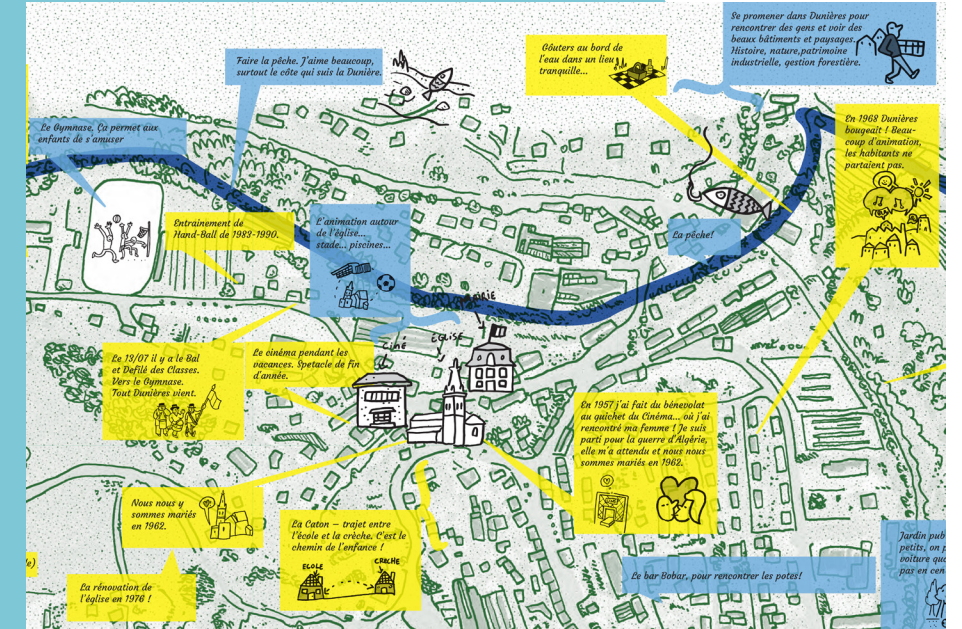
During the Urban **Diagnosis** phase, a Subjective mapping of the territory was drawn up based on multiple meetings with the inhabitants. A **Sensitive map** attempts to convey the affective dimension of a territory, to understand the landscape through a human-scale vision, to define a place based on

INITIATION AND ACTORS

Looking for ways to improve the quality of life of their inhabitants and to attract new ones, the **local authorities** of Dunières had conducted the urban study for the revitalization of the town center with the **help of the Department of Haute-Loire and the federal**



Commune de Dunières
©Juliana Gotilla, Atelier Captain Ludd



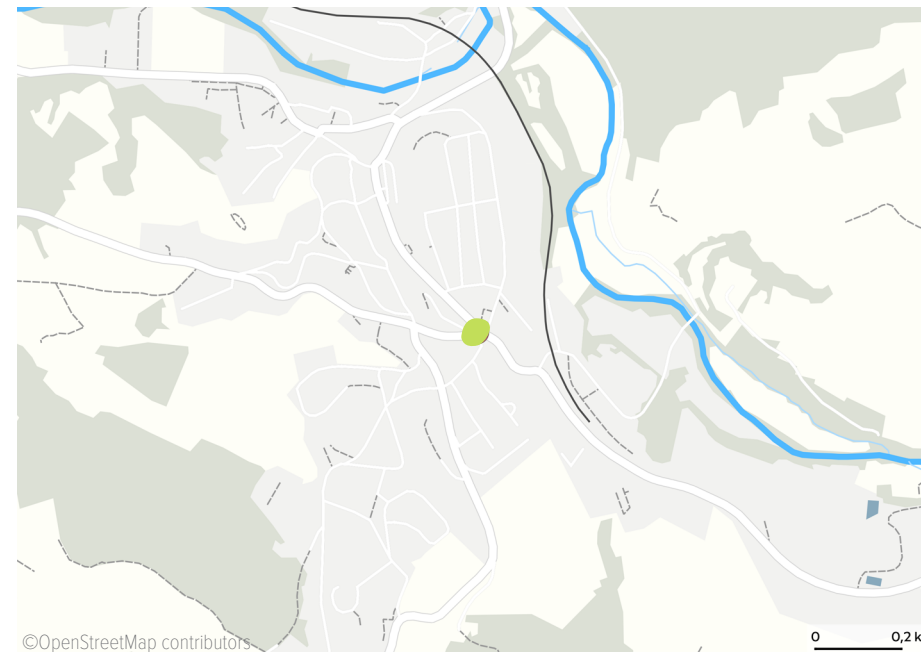
Sensitive map zoomed
©Urban Project team : NOVÆ Architecture et Ingénierie, Atelier de design Captain Ludd , Adhoc architecture, IEM programmation urbaine (illustrations : Martin Guillaume)



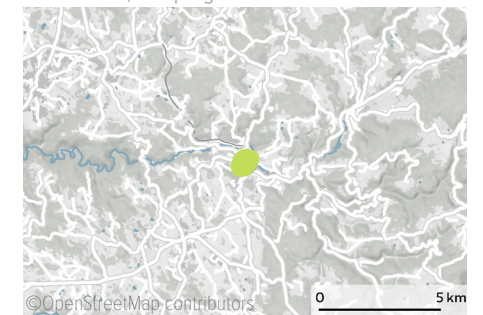
Map of Dunières
©NOVÆ Architecture et Ingénierie



What future for Dunières center?
©Urban Project team : NOVÆ Architecture et Ingénierie, Atelier de design Captain Ludd , Adhoc architecture, IEM programmation



©OpenStreetMap contributors



Dunières, Haute Loire, France

more about this project

