

Village Smithy - for sustainable living spaces

Dorfschmiede - für nachhaltige Lebensräume



LOCATION

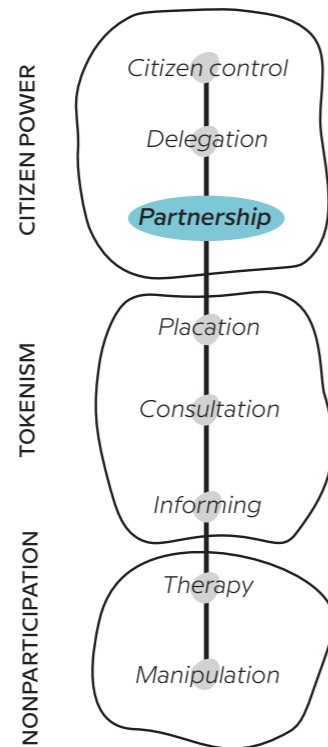
Gutenstein, Austria

TIME PERIOD

Since 2018

THE PROJECT

The "Dorfschmiede" project consists of the renovation of an old inn in Gutenstein, which now has many uses, such as a pub, a workshop space or a shop for sustainable products. The goal of the activists - who had settled in the village with their company which produces tiny houses - is to live a self-sufficient, self-determined and sustainable work and life style.



participate in the activities and this place has become a landmark for the economic life of the settlement. It must be clearly stated here that **the success of the project is largely due to the entrepreneurial energy of Theresa Mai and her comrades-in-arms**, also given the fact that there is **no financial support from the official side**.

RESULT

The goal of finding a suitable production and living location was achieved by far. The village also offered and still offers the possibility of establishing other businesses with which synergies are generated. In the first phase, the company that produces the tiny houses benefited from the move to Gutenstein. Almost simultaneously, other producing and creative companies and individuals have received a benefit through the cooperation. The **project also benefited community life, as the workshops and lectures in the Dorfschmiede provide numerous opportunities to learn from each other**. Consequently, that is why the project is generally rated very positively without exception.

DESCRIPTION OF THE SPACE

Gutenstein lies in a deeply cut and very long valley. Due to this width restriction in the valley floor, the **village is very elongated and is more a chain of individual settlements or farmsteads** than a village with a center. Thus, the remoteness comes from the low population density, the geographical characteristics of the place and also the poor condition of buildings in the settlements. In Gutenstein, there is a **lack of public open spaces tailored to the special needs of the local community**. Some publicly accessible green spaces have been created, but they are rather rare.

houses, that had the infrastructure to enable self-sufficient, self-determined and sustainable living and business. Of the 90 Austrian villages registered, Gutenstein was chosen. For community purposes, a suitable location was still missing, which was found in the disused inn „Gutensteiner Hof“ (now Dorfschmiede).

ROLE OF THE LOCAL COMMUNITY & METHODS USED

Regarding the **renovation of the inn, a cooperative was founded with 50 members who are part owners of the property**. It serves as a platform to enable lively togetherness in the village (e.g. workshops, lectures, etc.). New businesses have settled here and existing jobs have been preserved. From the beginning, "wohnwagon" and later the "Dorfschmiede" actively invited the population to

INITIATION AND ACTORS

The **project began when entrepreneur Theresa Mai was looking for a village for her company**, which builds tiny



Graz Dorfschmiede
©FH JOANNEUM – photo by thuemmel-strittmatter



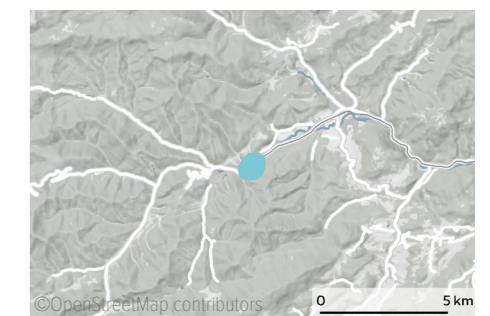
An information event in the rooms of the Dorfschmiede
©dorfschmiede



Workshops are held regularly at the Dorfschmiede, and the focus here is on sustainable do-it-yourself.
©wohnwagon.at



Biologically dynamic vegetables from the garden farm are used in the kitchen of the Dorfschmiede.
©dorfschmiede – photo by Erich Rossmanith



©OpenStreetMap contributors
Gutenstein, Lower Austria, Austria

more about this project

