

Wolimierz Station

Stacja Wolimierz

LOCATION

Pobiedna, Poland

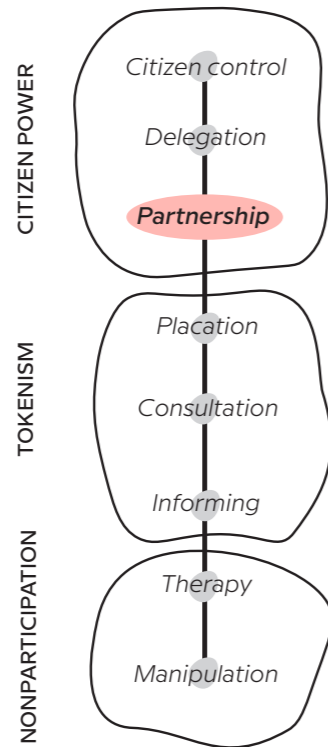
TIME PERIOD

Since 1991



THE PROJECT

In the past, there was a railway line in Pobiedna that reached Wolimierz. After the Second World War, the line was closed down and disassembled. However, the station and its surroundings remained and have become a cradle of initiatives in the village. The challenge was to create a friendly space for people looking for an alternative lifestyle in line with nature while tackling local issues as much as possible.



them began to actively participate in workshops and festivals.

RESULT

Wolimierz Station is a place which now attracts lots of people from the area, Poland, and from around the world. The activities have succeeded in combining creativity with local problem solving, education, and ecological issues. The cooperation with local organizations brought new possibilities. Everyone who wants to attend the creative works, simple spectators or actors, benefited from the creative works. Some economic effects were even felt in the settlement. Although the local community was initially distrustful of the activities, the creative works are now well perceived by both visitors and the citizens, who are curious and want to contribute to them.

DESCRIPTION OF THE SPACE

Located at the foot of the Iżera Mountains, Pobiedna could be defined as a remote place by its geographical characteristics as well as **limited traffic connections**. Moreover, the settlement has **only basic life support** facilities and suffers from their small number. Remoteness is amplified by a **low population density, which has decreased** in the last decades. With its 13 streets, Pobiedna is mostly rural and has few public initiatives and services. The only **public places are of poor quality**, such as an old park near the Meffersdorf palace or a playground for children.

demolition and has renovated it into a cultural space.

ROLE OF THE LOCAL COMMUNITY & METHODS USED

Since the renovation of the station, the place has hosted creative works such as workshops, festivals, and theatre performances. Activities have also been designed for the local community, including the **construction of a playground made of natural materials and a bus stop similar to traditional houses**. Ecological concerns have become important and many activities have focused on these issues. The artists were authorized by the local government to use the old railway station and convert it into a cultural centre. The involvement of the inhabitants in the activities has continued to grow over the years. **At first, the citizens were only spectators or volunteers for the organization, but then some of**

INITIATION AND ACTORS

For more than twenty years, the project has been **mainly operated by a group of artists and friends known as the "Klinika Lalek" puppet theatre**. This group of artists has saved the buildings from



Wolimierz festival 2020
©Agnieszka Prymon



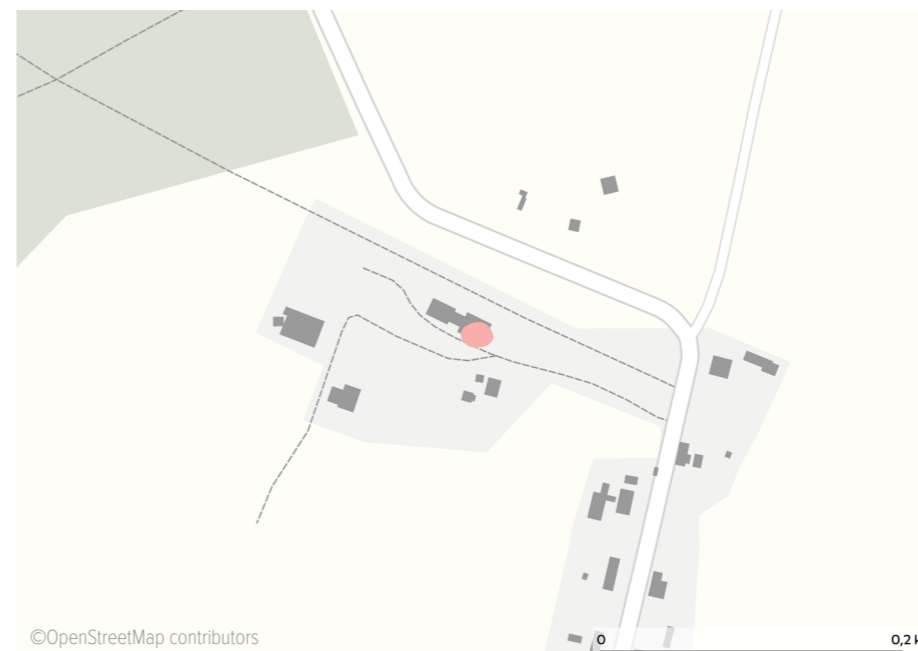
Wolimierz festival 2020
©Agnieszka Prymon



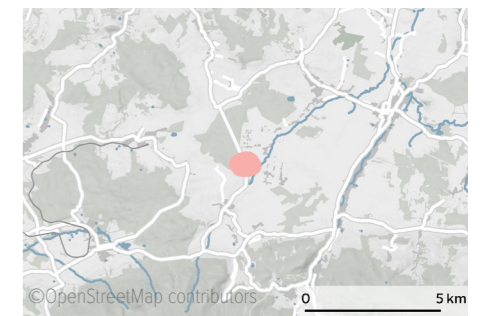
Wolimierz festival 2020
©Agnieszka Prymon



Wolimierz festival 2020
©Agnieszka Prymon



©OpenStreetMap contributors



Pobiedna, Lower Silesia, Poland

more about
this project

