



Mythical Park

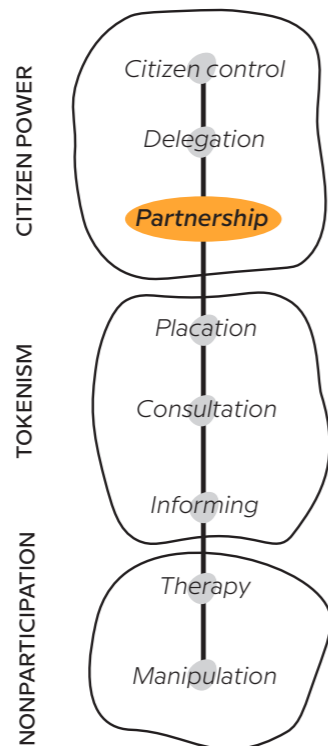
Mitski park

LOCATION

Rodik, Slovenia

TIME PERIOD

From 2018 to 2021



THE PROJECT

The Mythical Park extends outside the village itself, including paths through forest and meadows which are the main point of interest. Rodik having a cultural and historical legacy from Slavic and pre-Christian tradition, the goal of the project was to create a **new tourist landmark focused on local legend and heritage**. This place is part of a **cross-border project** involving the Trebišće area from Croatia.

DESCRIPTION OF THE SPACE

Rodik has a rural image due to its locations but also by the fact the village lacks basic daily life support facilities, forcing locals to drive to fulfil certain needs. The settlement remoteness is characterised too by the **low population density and its economical inferiority**. However this perception of remoteness is mitigated due to **good transportation** long-distance connections by train. In Rodik, because practically all public surfaces are accessible for road vehicles, the settlement **lacks public spaces** such as public squares or parks. The exceptions are the paths integrated to the Mythical park which offer a contact with nature.

INITIATION AND ACTORS

Even if the project was led by Slovenian-Croatian cooperation

between the municipalities of Hrpelje-Kozina and of Mošćenička Draga, the original idea of the Mythical Park of Rodik came from the **University of Primorska**. However, a wide range of actors have cooperated in the implementation of the work.

ROLE OF THE LOCAL COMMUNITY & METHODS USED

The Mythical Park consists of **twelve mythological points in two "mythic" trails which tell stories of ancient legend with sculptures or stone installations**. The involvement of the local community was crucial for this project. The **inhabitants contributed in different ways like their participation as tour guide or staff member**, the creation of some pieces now exhibited in the park by sculpture students, or the access given by landowners to use their lands. The implementation

of the Mythical Park in Rodik was permitted thanks to institutional fundings from the E.U. Interreg Slovenia-Croatia and from the Slovenian municipality which currently operates the park.

RESULT

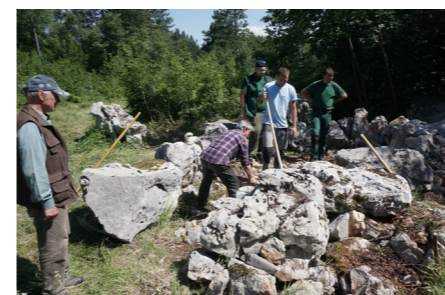
As the park's opening coincided with the Slovenian Covid-19 restrictions, the full economic impact of the project has not yet been fully realised, particularly for the tourism sector which should be the main beneficiary of this project. However, the objective of creating a tangible and intangible heritage presentation has been achieved and it **has raised the awareness of the community about the local legacy**. An additional impact has been the **promotion of young local artists who made some sculptures** now permanently exhibited but also the fact that the concept has attracted two established Slovenian sculptors. Mythical Park has already attracted many visitors who have purchased local products. Both tourists and the local community have shown a positive interest in it.



Students workshop under the mentorship of Špela Šedivy
©Mitski park - photo by Aleksander Zdjarsky, VSS Sežana



Instalment of stone elements in Rodik
©Mitski park - photo by Neža Jandrič, VSS Sežana



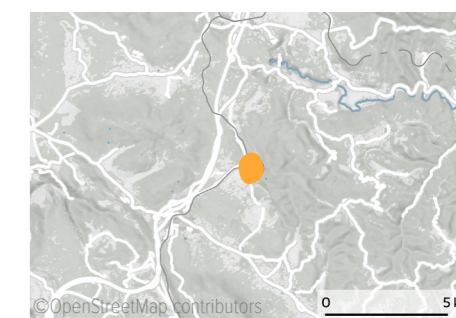
Works on the Baba point lead by sculptor Marko Pogačnik
©Mitski park - photo by Katja Hrobat Virloget



Sculpture workshop in Rodik, open for visitors to witness the creative process
©Mitski park - photo by Aleksander Zdjarsky, VSS Sežana



©OpenStreetMap contributors



Rodik, Coastal-Karst, Slovenia

more about this project

