



House on the Hill

Hiša na hribu

LOCATION

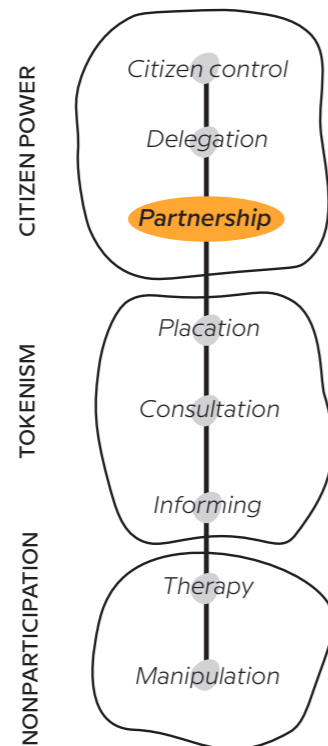
Žlebe, Slovenia

TIME PERIOD

Since 2015

THE PROJECT

The House on the Hill project is located on three locations, but the main exhibition stands next to St. Margaret Church in Žlebe. This place is composed of a granary and an old deacon's house where most activities took place. The exhibition was designed with the social aim to connect artists from different backgrounds in a common project but also to fight the "cultural remoteness" of this kind of place while gathering people.



DESCRIPTION OF THE SPACE

Despite the fact Žlebe is only 15km away from Ljubljana, the settlement suffers from poor transportation connections and difficulties in accessing-daily-life support facilities. However, the strong remoteness comes mainly from subjective criteria. As Žlebe is a set of dispersed hamlets and not a continuous settlement, the village lacks public spaces where people can meet. Although few infrastructures exist such as churches, these ones are difficult to reach.

INITIATION AND ACTORS

The project was initiated by Zavod CCC, a contemporary art institute which seeks to promote contemporary art in remote places. To achieve that goal, 50 artists from different

backgrounds and countries have collaborated to create multiple artworks to be displayed in Žlebe.

ROLE OF THE LOCAL COMMUNITY & METHODS USED

In 2021 the main activity was the co-design of the MI-ZA project ("miza" means table in Slovenian, but can be read as the composition of two words: MI=we/us, ZA=for). MI-ZA was supposed to be a symbol of the local community, a place where family, collectives, strangers and natives gather. This table was an artistic production of different invited artists and locals. The long-term goal of MI-ZA was to involve visitors to the House on the hill in reproducing templates through the wood printing technique. The upper part of MI-ZA (the table) is made from 72 small wooden plates, each carved by one of the artists to become woodcut art works

ready for graphic printing. Creating artworks, they became "artists" by themselves. The local community contributed to the project also by helping to set up the exhibition. It encouraged them to see the final work and visit the place. The project was made possible by funding from public actors such as the European Union and the Public Institute Sotočje Medvode, but also from the private company BB.Bio. In addition, local institutions helped by agreeing to lend the two buildings to host the activities.

RESULT

Despite some difficulties at the beginning, the project has become a landmark for the cultural life in the area. The achievement is shown by the fact that the project has been renewed every year for 7 years. The artists succeeded in involving visitors in activities and making them aware of the heritage of the settlement and of contemporary art production. The local community seems to be the main beneficiary because it benefited from the access of art and culture, learned more about their traditions but the activities were a way to socialize too. **Although the first creative work was ambiguously perceived by the local community, the project is now accepted and the local community, especially local pupils.**



MIZA table
© Urban Planning Institute of the Republic of Slovenia (UIRS)



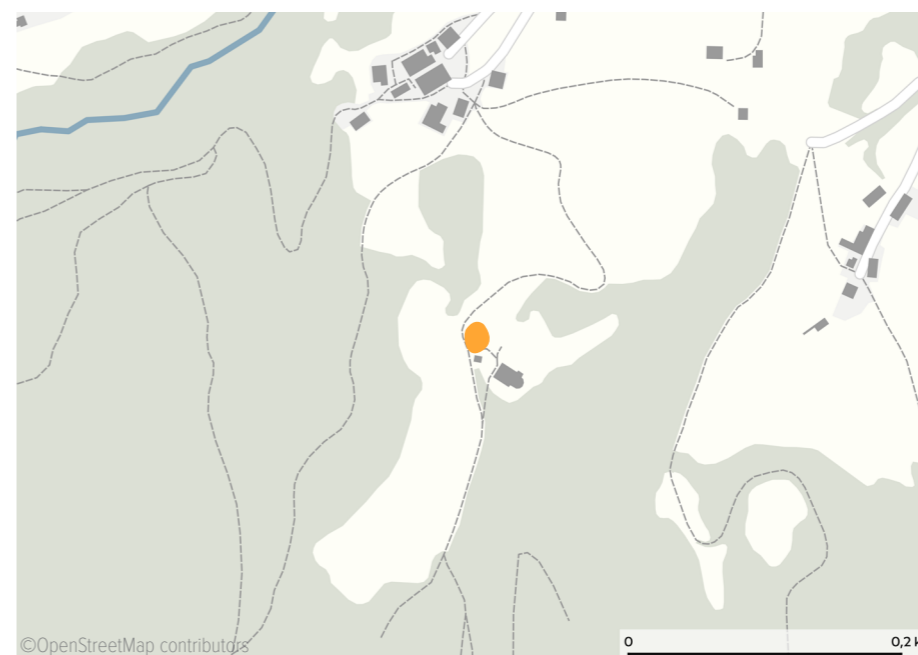
View from the road below the hill
© Urban Planning Institute of the Republic of Slovenia (UIRS)



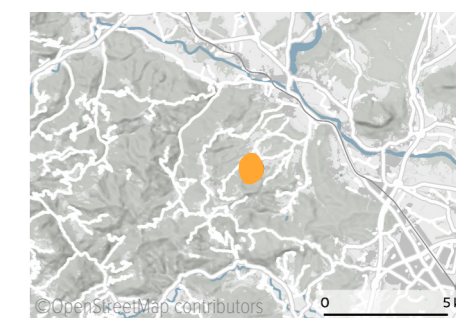
Pots that are part of the hiking participatory artwork
© Urban Planning Institute of the Republic of Slovenia (UIRS)



Children in main house
© Urban Planning Institute of the Republic of Slovenia (UIRS)



©OpenStreetMap contributors



Žlebe, Slovenia

more about this project

